

# SHEHA DOORS

# 2022



EGYTrade  
Import & Export S.A.E



# Create a lasting impression with Sheha doors!

Beautiful doors create beautiful experiences and we understand that doors are a gateway to a hidden world that wait to welcome their guests. Can that extraordinary experience come alive through an ordinary door? To give a complete solution to your entryway, Sheha creates attractive doors that fit your style.



Sheha doors are designed combining the best of both worlds, old-world craftsmanship and latest technology. Our door range exhibits the widest variety of styles, designs and materials that are sure to match every need, taste and style.

We are constantly evolving with the changing needs and by the latest trends. Our passion for exquisite designs drives us to take you closer to your dream door and make the decision-making process easier.

We specialise in making doors for **Residential & Commercial Projects** and take pride in creating awe-inspiring front doors for the world to get inspired from.

**Exclusive designs,  
just for you!**



At Sheha, there's a door for every buyer. Our designs are inspired by imaginations which are crafted into contemporary and traditional designs to let the buyer choose from.

- Unlimited Doors & Door frame designs
- Doors built as per market needs
- Highly functional products delivered
- Specialised in Pre Hung doors

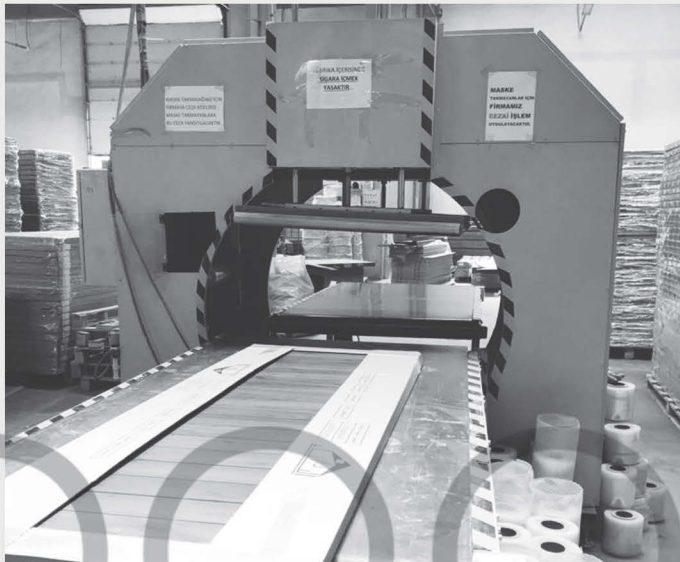


## Customisation, to reflect your style.



Finding that one perfect door can be an unending quest, right?

Some doors will look nice to you, but the colour won't be that great. Sometimes the material will be fine, but the design could have been better. At Sheha, you can breathe a sigh of relief with our customisation service. Together we'll help transform your imagination, style & taste into that one perfect door you were looking for.

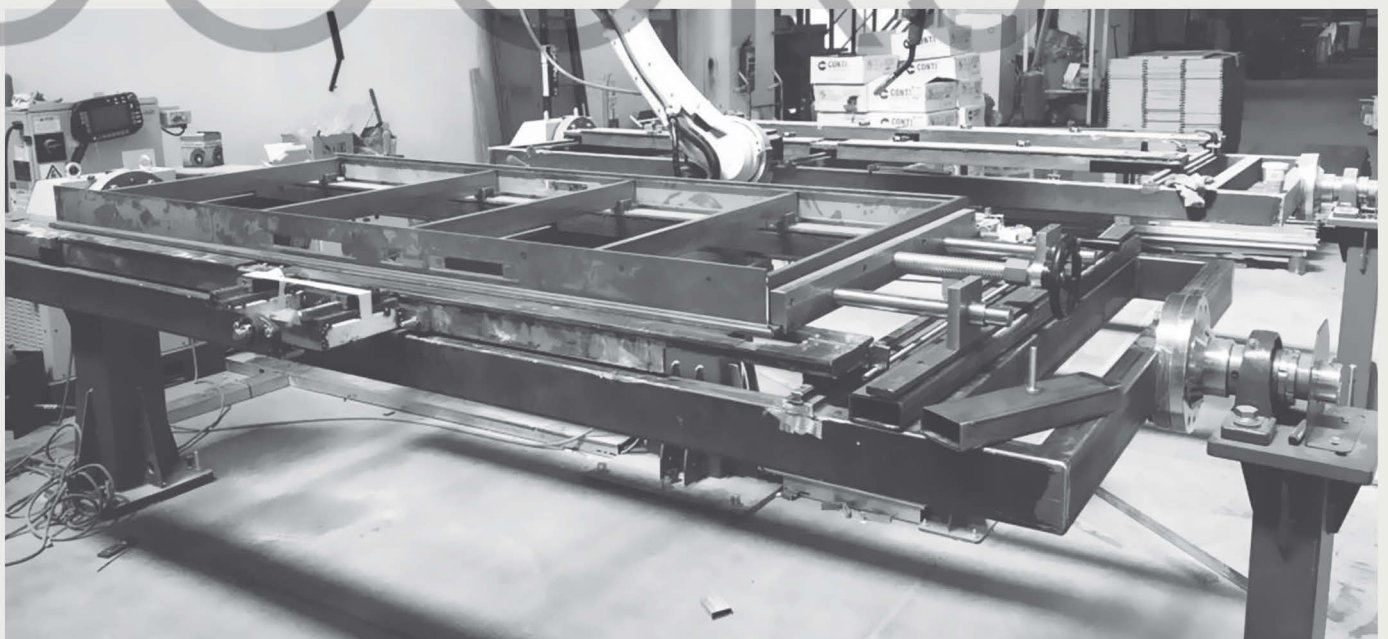


## Experience & Technology, to try-before-you-buy



Since our inception, we have always believed in evolving with the changing choices of our customers and embracing innovation.

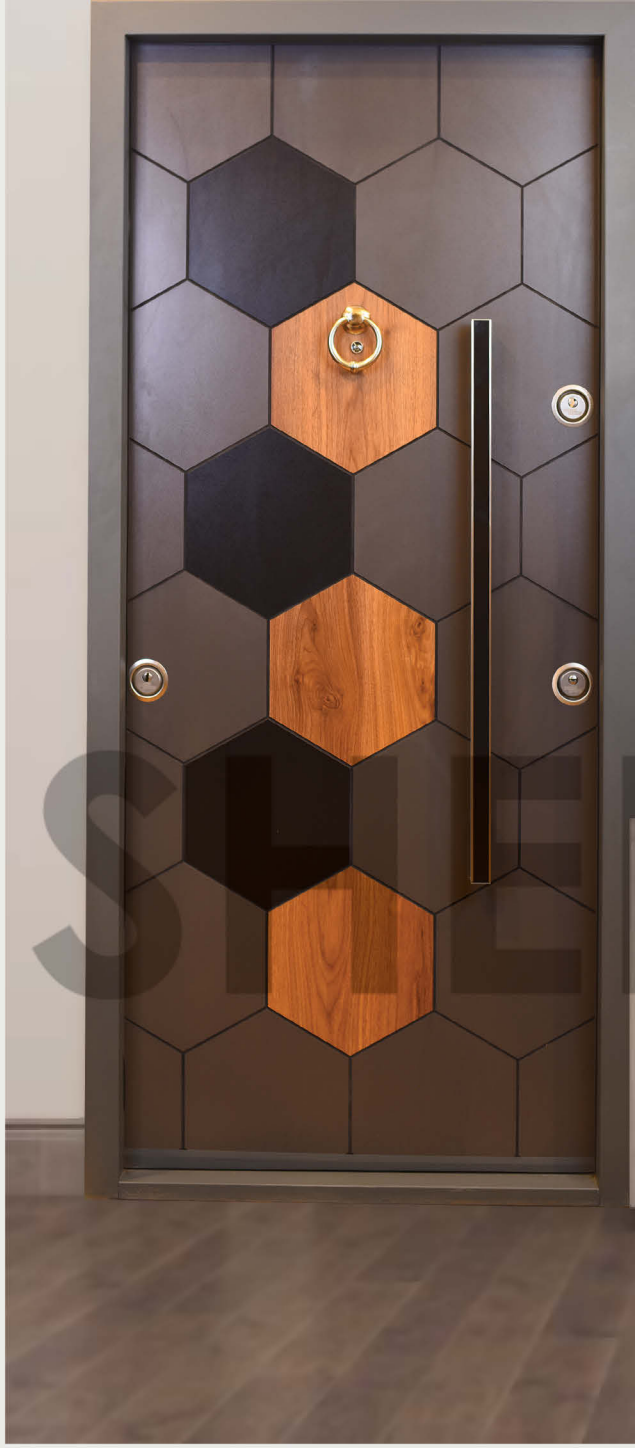
- Only Manufacturer who gives end-to-end solutions
- Vertically integrated to have control over raw material, production, logistics and sales
- European technology used for precision and quality
- Only Manufacturer who gives end-to-end solutions



## الابواب المصفحة

## SHEHA DOORS

Code: 405

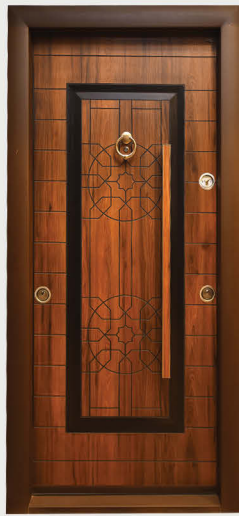


### مواصفات الباب المصفح:

- ◀ تصفيح كامل بطول و عرض الباب
- ◀ صوف صخري عازل للصوت و ضد الحريق.
- ◀ سمك الدفلة ١١ سم.
- ◀ الحلق ١٥ سم.
- ◀ بار خارجي او بار داخلي ( حسب اختيار العميل).
- ◀ كوالين ماركة هوك.
- ◀ ٣ كالون او ٢ كالون او ١ كالون + كالون الدليفري ( حسب اختيار العميل).
- ◀ خباطة.
- ◀ عين سحرية.
- ◀ دهان طبيعي يسهل معالجته في حالة حدوث اي خدش.



Code: 2412



Code: 2347



Code: 1288



Code: 1422



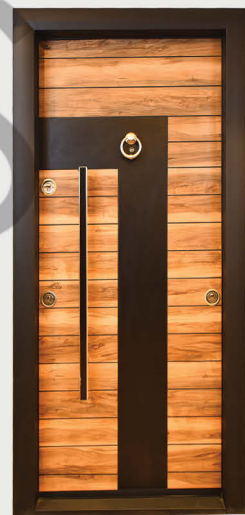
Code: 2379



Code: 2376



Code: 2028



Code: 2198



Code: 5308



Code: 5010



Code: 5013



Code: 5214



Code: 5226

Code: 2510



Code: 5504



DOUBLE DOORS



Code: Double 2198





Code: Double 2379



Code: Double 5214



# DOUBLE DOORS

# SHEHA DOOR FRAMES





# DOOR FRAMES

**Sheha Frames** are factory finished to match the aesthetic look of the door leaf and give a coordinated look to your vision.

Architrave size can be customized as per customer's requirement.



SHEHA DOORS  
2021



SHEHA



SHEHA DOORS



Code: 1-UNAL 603



Code: A10



Code: A09

DOORS



Code: A11



Code: 2-012 ITALYAN CEVIZ



Code: 2-2053 GRI



Code: A08



Code: 1-012 ITALYAN CEVIZ

# أبواب الخريف

Code: 5-012 ITALYAN CEVIZ

◀ أبواب غرف تركي مصنوعة من أجود أنواع الخشب الموسكي بتقنية الخشب المتعاكس الموصول (finger joint) تعطي للباب متانة وقوة ولا يحدث أي التفاف في الباب .

◀ الباب جاهز لايحتاج الي دهان و به طبقة من البي في سي ضد المياه و بديلة للدهان تعطي مظهر جذاب للباب و يمكن غسل الباب و تنظيفه في حالة الاتساخ.

◀ حلق الباب من الاكليرك المقوي لا يتأثر بالمياه و الرطوبة و العفونة.

◀ الباب شامل كافة الاكسسوارات صناعة تركية ذات جودة عالية وتشمل ( الاوكر ، الكالون ، المفصلات)





# SHEHA DOORS



Code: A 06



Code: 6-012 ITALYAN CEVIZ



Code: A 07



Code: 5-UNAL 603



Code: A 02



Code: A 01



Code: 2-UNAL 603



**Alexandria :**

Om Zegheo - wasla road - in front of the Environmental Protection Agency Building.

Tel.: 01100078145 - 01200009621

**Menoufia :**

Menouf Srs road - in front of Riad St.

Tel.: 01006716794 - 01103938125